
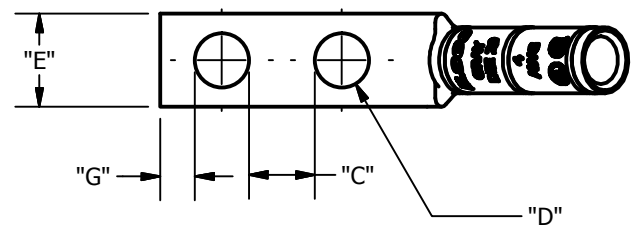
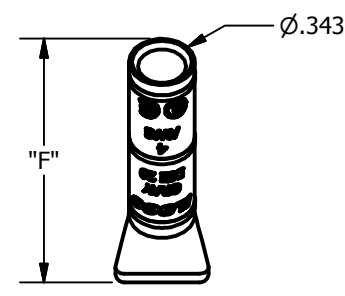
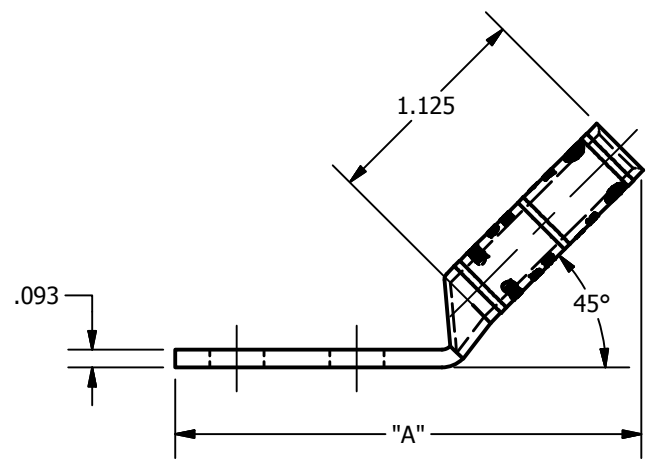


SCREW: NONE	MATERIAL: COPPER	REV: F	 800-776-9775 www.ilSCO.com
CAT. NO.: SEE CHART	PLATING: EL-TIN	DRAWN BY: DW SCALE: NTS	
INFORMATION SHEET: FORM 157	MARKING: SEE CHART	DATE: 6/3/2008 SIZE: B	
			DWG NO: <b>Y0303-D-4</b>
			SHEET: 1 OF 1



DETAIL C  
INK MARK TOP & BOTTOM



CATALOG NUMBER	"A"	"C"	"D"	"E"	"F"	"G"	TANG MARKING
CLNB-4-10-12-4	2.368	0.281	0.219	0.486	1.280	0.148	UL, ILSCO, CSA, CLNB-4-10-12-4, 10 x 1/2, 4 AWG, DIE 29
CLNB-4-10-58-4	2.368	0.406	0.219	0.486	1.280	0.148	UL, ILSCO, CSA, CLNB-4-10-58-4, 10 x 5/8, 4 AWG, DIE 29
CLNB-4-10-1116-4	2.368	0.468	0.219	0.486	1.280	0.148	UL, ILSCO, CSA, CLNB-4-10-1116-4, 10 x 11/16, 4 AWG, DIE 29
CLNB-4-10-34-4	2.555	0.531	0.219	0.486	1.280	0.148	UL, ILSCO, CSA, CLNB-4-10-34-4, 10 x 3/4, 4 AWG, DIE 29
CLNB-4-10-1-4	2.805	0.781	0.219	0.486	1.280	0.148	UL, ILSCO, CSA, CLNB-4-10-1-4, 10 x 1, 4 AWG, DIE 29
CLNB-4-14-12-4	2.368	0.219	0.281	0.486	1.280	0.180	UL, ILSCO, CSA, CLNB-4-14-12-4, 1/4 x 1/2, 4 AWG, DIE 29
CLNB-4-14-58-4	2.555	0.344	0.281	0.486	1.280	0.180	UL, ILSCO, CSA, C-4-14-58, 1/4 x 5/8, 4 AWG, DIE 29
CLNB-4-14-34-4	2.555	0.469	0.281	0.486	1.280	0.180	UL, ILSCO, CSA, CLNB-4-14-34-4, 1/4 x 3/4, 4 AWG, DIE 29
CLNB-4-14-1-4	2.805	0.719	0.281	0.486	1.280	0.180	UL, ILSCO, CSA, CLNB-4-14-1-4, 1/4 x 1, 4 AWG, DIE 29
CLNB-4-516-58-4	2.555	0.282	0.343	0.486	1.280	0.180	UL, ILSCO, CSA, CLNB-4-516-58-4, 5/16 x 5/8, 4 AWG, DIE 29
CLNB-4-516-34-4	2.805	0.407	0.343	0.486	1.280	0.180	UL, ILSCO, CSA, CLNB-4-516-34-4, 5/16 x 3/4, 4 AWG, DIE 29
CLNB-4-516-78-4	2.805	0.532	0.343	0.486	1.280	0.180	UL, ILSCO, CSA, CLNB-4-516-78-4, 5/16 x 7/8, 4 AWG, DIE 29
CLNB-4-516-1-4	3.055	0.657	0.343	0.486	1.280	0.180	UL, ILSCO, CSA, CLNB-4-516-1-4, 5/16 x 1, 4 AWG, DIE 29
CLNB-4-516-134-4	3.618	1.407	0.343	0.486	1.280	0.180	UL, ILSCO, CSA, CLNB-4-516-134-4, 5/16 x 1-3/4, 4 AWG, DIE 29
CLNB-4-38-34-4	2.805	0.344	0.406	0.593	1.280	0.211	UL, ILSCO, CSA, CLNB-4-38-34-4, 3/8 x 3/4, 4 AWG, DIE 29
CLNB-4-38-78-4	3.055	0.469	0.406	0.593	1.280	0.211	UL, ILSCO, CSA, CLNB-4-38-78-4, 3/8 x 7/8, 4 AWG, DIE 29
CLNB-4-38-1-4	3.055	0.594	0.406	0.593	1.280	0.211	UL, ILSCO, CSA, CLNB-4-38-1-4, 3/8 x 1, 4 AWG, DIE 29
CLNB-4-38-116-4	3.055	0.656	0.406	0.593	1.280	0.211	UL, ILSCO, CSA, CLNB-4-38-116-4, 3/8 x 1-1/6, 4 AWG, DIE 29
CLNB-4-38-118-4	3.243	0.719	0.406	0.593	1.280	0.211	UL, ILSCO, CSA, CLNB-4-38-118-4, 3/8 x 1-1/8, 4 AWG, DIE 29
CLNB-4-38-134-4	3.743	1.344	0.406	0.593	1.280	0.211	UL, ILSCO, CSA, CLNB-4-38-134-4, 3/8 x 1-3/4, 4 AWG, DIE 29
CLNB-4-38-2-4	4.118	1.594	0.406	0.593	1.280	0.211	UL, ILSCO, CSA, CLNB-4-38-2-4, 3/8 x 2, 4 AWG, DIE 29
CLNB-4-12-1-4	3.243	0.438	0.562	0.750	1.280	0.265	UL, ILSCO, CSA, CLNB-4-12-1-4, 1/2 x 1, 4 AWG, DIE 29
CLNB-4-12-114-4	3.618	0.688	0.562	0.750	1.280	0.265	UL, ILSCO, CSA, CLNB-4-12-114-4, 1/2 x 1-1/4, 4 AWG, DIE 29
CLNB-4-12-112-4	3.743	0.938	0.562	0.750	1.280	0.265	UL, ILSCO, CSA, CLNB-4-12-112-4, 1/2 x 1-1/2, 4 AWG, DIE 29
CLNB-4-12-134-4	4.118	1.188	0.562	0.750	1.280	0.265	UL, ILSCO, CSA, CLNB-4-12-134-4, 1/2 x 1-3/4, 4 AWG, DIE 29
CLNB-4-12-178-4	4.118	1.313	0.562	0.750	1.280	0.265	UL, ILSCO, CSA, CLNB-4-12-178-4, 1/2 x 1-7/8, 4 AWG, DIE 29